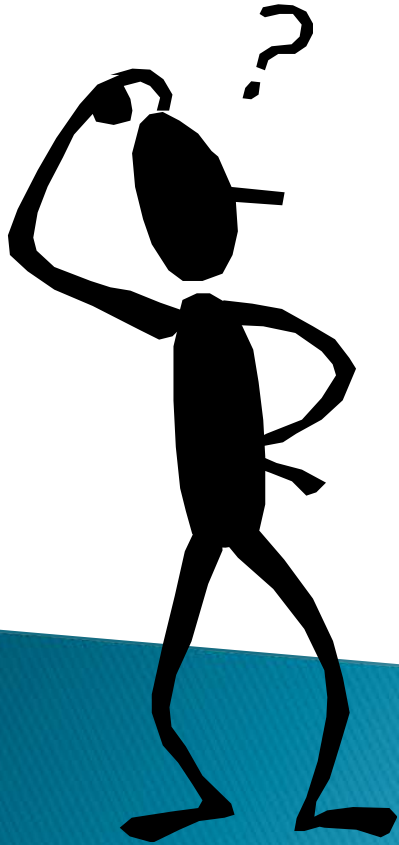


SCENIC BYWAY FUNDING 2012



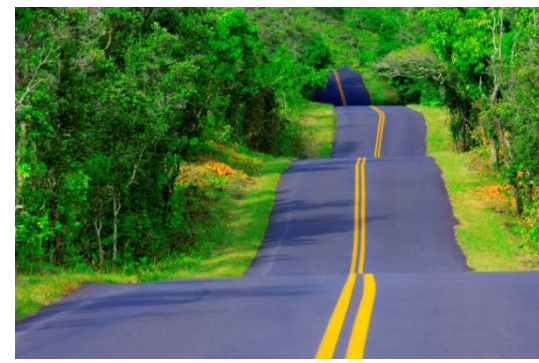
John Krause
Ted Vanegas
ITD Program Development

Objectives



- ▶ Develop a basic understanding of Idaho's Scenic Byway Program.
- ▶ Understand the currently open FHWA funding process for Scenic Byway Projects.

Idaho's Scenic Byway Program

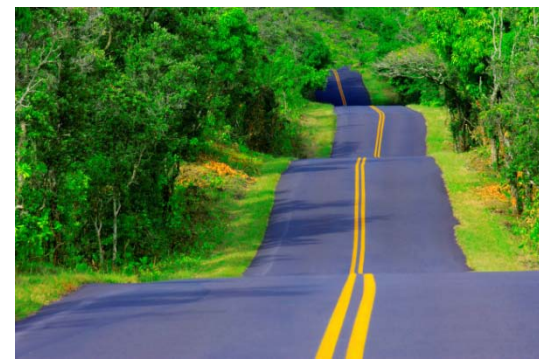


TWO KEY FUNCTIONS

- (1) to promote the scenic, historic, and backcountry byways of Idaho, and
- (2) to provide funding for tourist amenities, kiosks, and signs that will assist the traveler on the byways.

Scenic Byways are a statewide asset that can improve *economic opportunities* for Idaho communities.

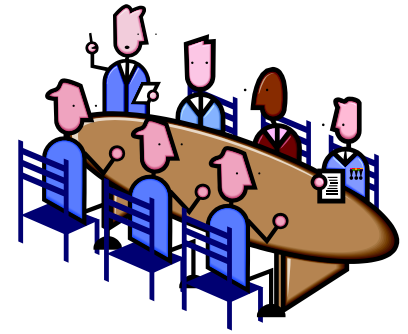
Idaho's Scenic Byway Program



BYWAY INTRINSIC QUALITIES

- ▶ **Archaeological**
Special historic interest as identified through ruins, artifacts, structural remains, and other physical evidence
- ▶ **Cultural**
Expressing the customs or traditions of a distinct group of people.
- ▶ **Historic**
Encompassing legacies of the past
- ▶ **Natural**
Have features predating the arrival of human populations.
- ▶ **Recreational**
Involving outdoor recreational activities
- ▶ **Scenic**
Delivering a heightened visual experience

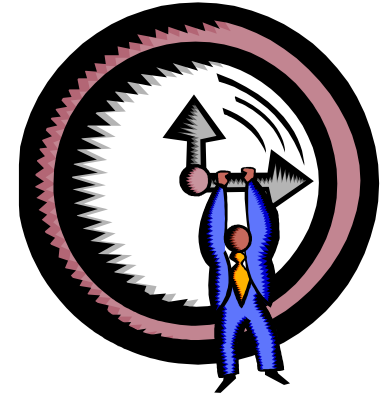
Governance



SCENIC BYWAYS ADVISORY COMMITTEE

- Defined in ITD Admin and Board Policies
- Meets 4 times per year.
- Consists of State and Federal agency membership plus interested parties.
- Tasked with prioritizing annual funding applications.
- Review and approval of CMP's.
- Provides advisory function to ITD Board.

Typical Byway Lifecycle



KEY MILESTONES

1. Develop proposal for designation as a state byway¹.
2. Initiate project to create initial Corridor Management Plan (CMP).
3. Seek funding to implement CMP byway improvements.
4. Repetition of following steps:
 - a. Additional project(s) to implement CMP byway features.
 - b. Project to refresh Corridor Management Plan.
5. Develop proposal(s) to seek national byway status.

^{1/} For more info, contact Idaho SB Program
at ScenicByways@itd.idaho.gov.

National Scenic Byways Program



FHWA FUNDING PROGRAM

- Nationally competitive – approximately \$40 million annually (2012 limited to \$20 M).
- No pre-allocation of amounts to states.
- Annual award cycle
 - Application process normally from Jan – April.
 - Awards announced by September or October.
 - Project implementations typically begin in following spring.
 - Process in past two years has not been normal.

FHWA Funding Program



GRANTS AND ELIGIBLE EXPENSES

- 80%–20% ratio of federal aid to match
- Eligible project focus
 - Byway Programs
 - Corridor Management Planning ☺
 - Safety Improvements ☺
 - Byway Facilities ☺
 - Access to Recreation
 - Resource Protection
 - Interpretive Information
 - Marketing ☹

FHWA Funding Program



GRANT CHARACTERISTICS

- ▶ Reimbursement Grants.
- ▶ Implementation over multiple years.
- ▶ Cash and/or In-kind match:
 - Donated land, services, equipment and materials.
 - Must be directly related to progress on project.
 - Has to be documented in advance in grant application and state/local agreement.

FHWA Funding Program



AWARD AND IMPLEMENTATION PROCESS

1. Develop and submit proposal in response to annual national solicitation – IDAHO DEADLINE IS 12/19/11.
2. SBAC prioritizes projects at the state level
3. Project packet submitted to FHWA by 1/6/12.
4. FHWA makes grant award announcements.

FHWA on-line grant application at

www.bywaysonline.org/grants/.

FHWA Funding Program



2012 FHWA PRIORITIES

- ▶ Projects and activities that create new jobs in the short-term.
- ▶ Contribute to the economic competitiveness of the US over the long-term.
- ▶ Project should contribute to increased employment and enhance economic competitiveness.
- ▶ **Specific priority** to planning, safety, and infrastructure improvements to roadway facilities that have the greatest long-term strategic benefits.
- ▶ Geographic distribution of funding.

FHWA On-Line Grant Application



GETTING STARTED

1. Go to website at www.bywaysonline.org/grants/.
2. If needed, register and create a sign-on and password.
3. Will need to have DUNS number and CCR:
 - ▶ Data Universal Numbering System (DUNS) number; &
 - ▶ An active Central Contractor Registration (CCR).
4. Review the resource information shown at the end of this presentation and available for download from www.I-Way.Org.

FHWA On-Line Grant Application



CREATING YOUR APPLICATION

- ▶ Can create an entirely new application; or
- ▶ Can retrieve and modify an unsuccessful application from a prior year.
- ▶ Eight key areas to address: Checklist, Category, Location, Abstract, Details, Work Plan, Budget, and Attachments.
- ▶ The *Abstract* section is extremely critical – do a good job on this!

FHWA On-Line Grant Application

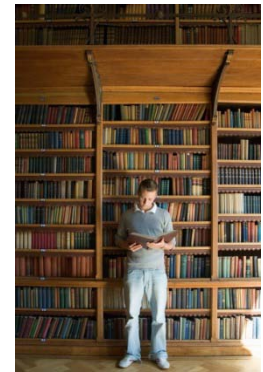


EIGHT KEY SECTIONS

- ▶ ***Checklist*** administrative certifications;
- ▶ ***Category*** Project Name, Location Type, Grant Category;
- ▶ **Location** Regional & Physical locations, specific byways involved, Congressional Districts;
- ▶ ***Abstract*** Project Description and Benefits to Byway(s);
- ▶ ***Details*** Project Summary narrative, Benefits Statement;
- ▶ ***Workplan*** Tasks, timelines, responsible party, task relevance;
- ▶ ***Budget*** Cost Breakdown and Matching Funds;
- ▶ ***Attachments*** Supporting material, e.g. brochures, plans, maps, and photos.

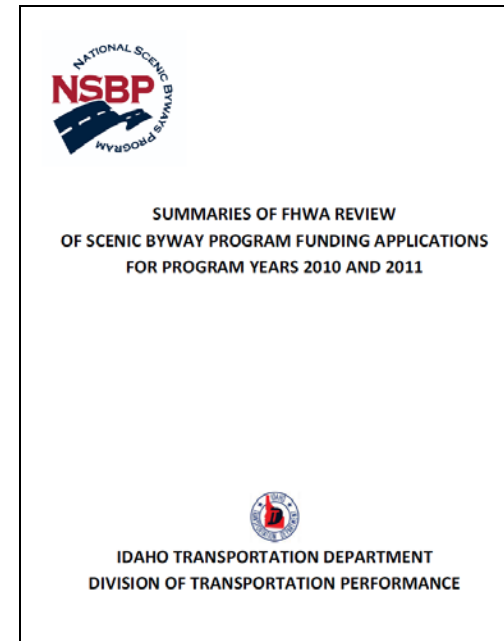
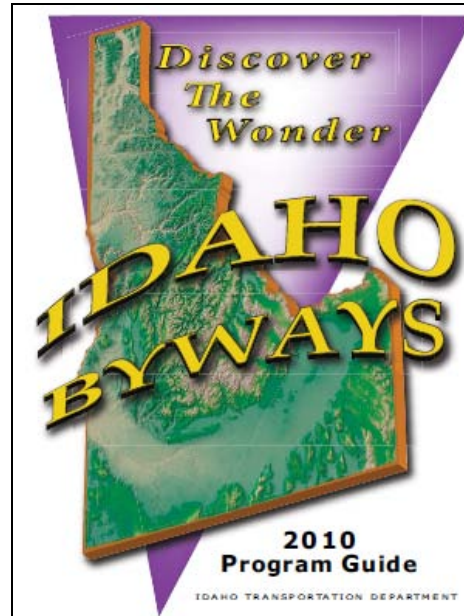
. . . Let's take a look at the application!

Key Resources



NSBP National Scenic Byways Program
FY 2012 Grant Information

Introduction.....	2
Before You Begin.....	2
What's New?.....	3
Getting Started.....	3
Preparing an Application.....	3
Project Benefits and Cost Sharing.....	5
Selected Improvements or Activities that are not Eligible.....	5
Preparing the Proposed Budget.....	6
Matching Share.....	6
Conditions for National Scenic Byways Program Funds.....	7
Rules.....	8
Role of the Applicant.....	8
Role of State or Indian Tribe Scenic Byways Coordinator.....	10
Role of FHWA Division Office Byways Contact.....	11
Role of FHWA Headquarters National Scenic Byways Program Staff.....	12
Announcement of National Scenic Byways Program Funding Decisions.....	12
Selection Criteria.....	12
Statutory Criteria.....	12
Administrative Criteria.....	13
Principles and Practices for Eight Categories of Eligible Project Activities.....	15
1. State and Indian Tribe Scenic Byways Program.....	15
2. Corridors or Management Plans.....	17
3. Safety Improvements.....	20
4. Byways Facilities.....	22
5. Access to Recreation.....	25
6. Resource Protection.....	27
7. Interpretive Information.....	31
8. Marketing Programs.....	34
Other Considerations.....	37
Multi-State, Multi-Tribe and Cross-State Corridors.....	37
Matching Funds Requirements.....	39
Income Based under the National Scenic Byways Program.....	42



Available for download on www.I-Way.Org

Key Resources



US DOT Application Webinars



Two webinar sessions are being offered on either

**Nov 29, 2011 at 12:00 Noon to 1:30 PM Mountain Time or
Dec 5, 2011 at 12:00 Noon to 1:30 PM Mountain Time.**

Registration is required for these sessions. To register follow the link provided below.²

www.bywaysresourcecenter.org/events/archives/2011/11/29/

^{2/} This webinar information and link will be posted at www.I-Way.Org.

Key Resources

John Krause – john.krause@itd.idaho.gov
(208) 334-8292

Ted Vanegas – Ted.Vanegas@itd.idaho.gov
(208) 332-7823

Scenic Byway Program – ScenicByways@itd.idaho.gov
(800) 527-7985

**Community Transportation Association of Idaho and
Mobility Managers** – <http://ctai.org/contact>



Questions?

?????

